

CORNEAL DONATION
SOUTH EASTERN TRUST
ULSTER ICU

APRIL 2010 MARCH 2011

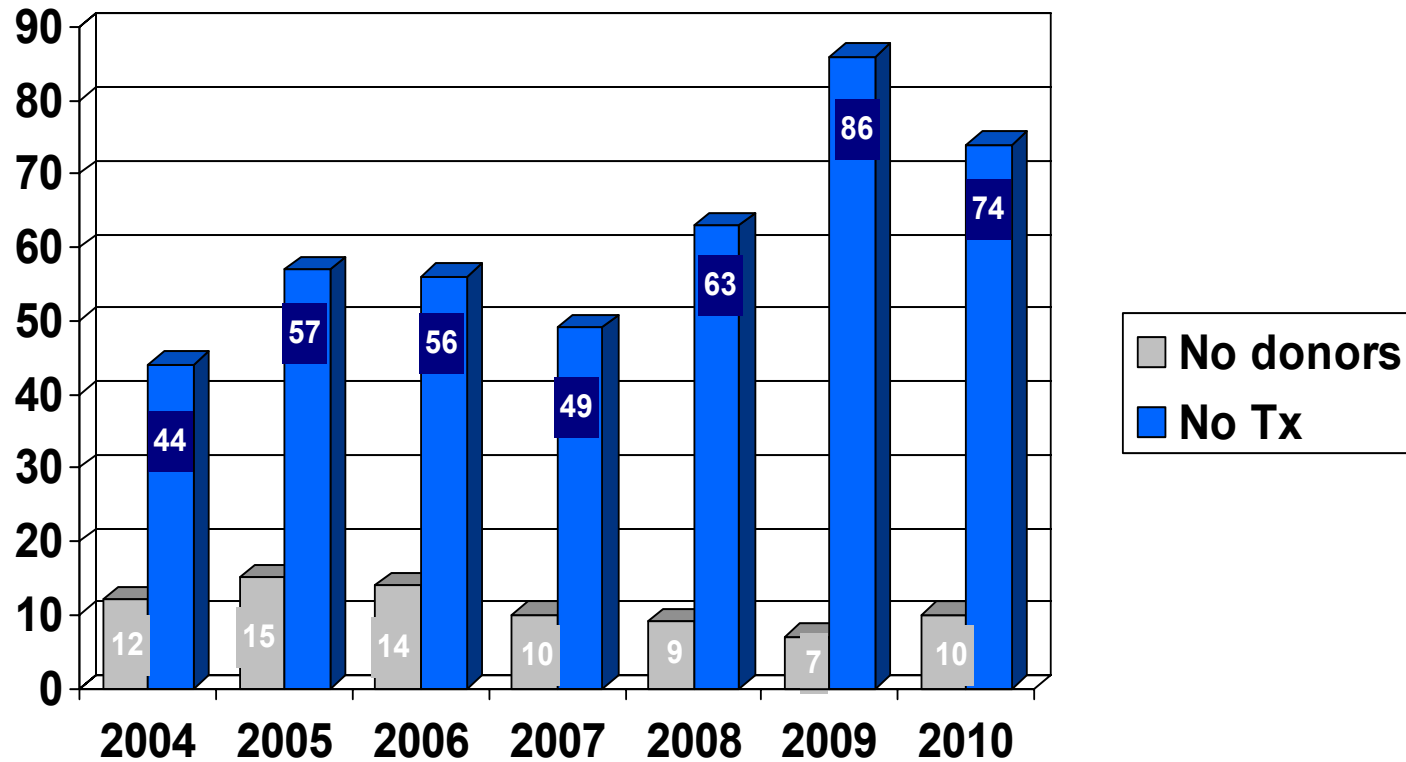
The Intensive Care Unit

- Increase in capacity 16 beds with 10 funded HDU/ICU
- Fabulous new building built and equipped to a very high standard
- Relatives accommodation
 - Waiting area
 - Quiet rooms
 - Overnight stays



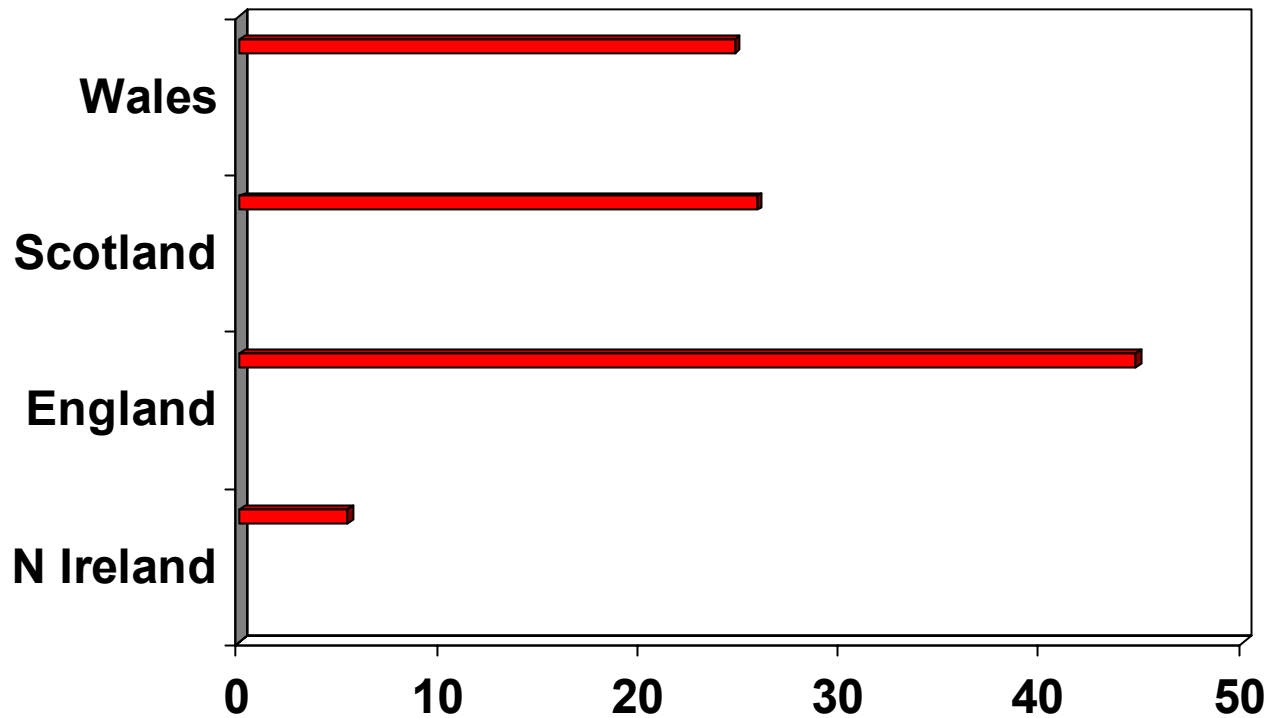


Corneal Donation Northern Ireland



Heather Savage
Specialist Nurse Organ Donation
South Eastern Trust

National corneal donation rates pmp



- Embedded in ICU Feb 2010
- Historically high referral rate for solid organ donation in unit
- No corneal only donation in the ICU

Process

- Discussion with nursing and medical staff about corneal donation was negative in the beginning as it was widely perceived families would not agree based on cultural issues relevant to Northern Ireland
 - » Open coffin
 - » Wake

Process

- Clinicians agreed nursing staff would approach all families re tissue donation after the patient had become astolye
- Nursing staff would not take consent but would seek agreement from the families to a call from Tissue services who would give the family all the information to make informed consent.

Process

- Education began end March 2010
- 95% of nursing staff trained by June 2010
- 1:1 sessions at bed space
- Small groups in ICU all shifts
- Ad hoc education

Process

- Began approaching families in April with little success
- Guidelines and flow chart introduced June 2010 approved by organ donation committee
- Flow chart, Tissue Services contact details placed in patient folder at each bed space and displayed at nursing stations
- A nursing form to record all deaths and approach Yes/No & reason introduced June 2010

- **CORNEAL DONATION PROTOCOL**

- If you are not aware of any contraindication to corneal donation.

- Staff approach family (**AFTER DEATH**) regarding the option of corneal donation.

- If family is in agreement staff identify
• next of kin and obtain their contact
• number and arrange a convenient time for the
• Tissue Donor Co-ordinator to contact the family

- If family is not in agreement
• staff will thank them for
• their time

- Refer to NBS Tissue Services

- Pager Number 08004320559– leave full name and full contact number.

- The on-call NBS Tissue Donor Co-ordinator will call you back.
• (*Have medical and nursing notes to hand*)

- Tissue Donor Co-ordinator will obtain all relevant consent including coroner and will arrange where donation will take place

- Tissue Donor Co-ordinator will provide follow up information to family and to referring staff.

Process

- Corneal donation leaflets and posters placed in relative areas
- Nurses asked what their thoughts were about the posters and leaflets most feedback was positive
- No families have voiced any concerns
- Target approach rate set at 45 % within 1 year
- Band 6 sisters agree to take overall responsibility for approach May 2010

Education

- Who, Where, When & How
- Contraindications : almost all their patients could donate
- Discussed common fears & misunderstandings

Education

- Retrieval process :
- Information given to the family by Tissue services :
- How to refer a potential tissue donor :
- Clarified bed side nurses role in the referral process :

Education

- Duty to give families the choice
- Duty to carry out the wishes of the deceased
- The benefits to the recipients
- Suggested some phrases to introduce corneal donation to the families

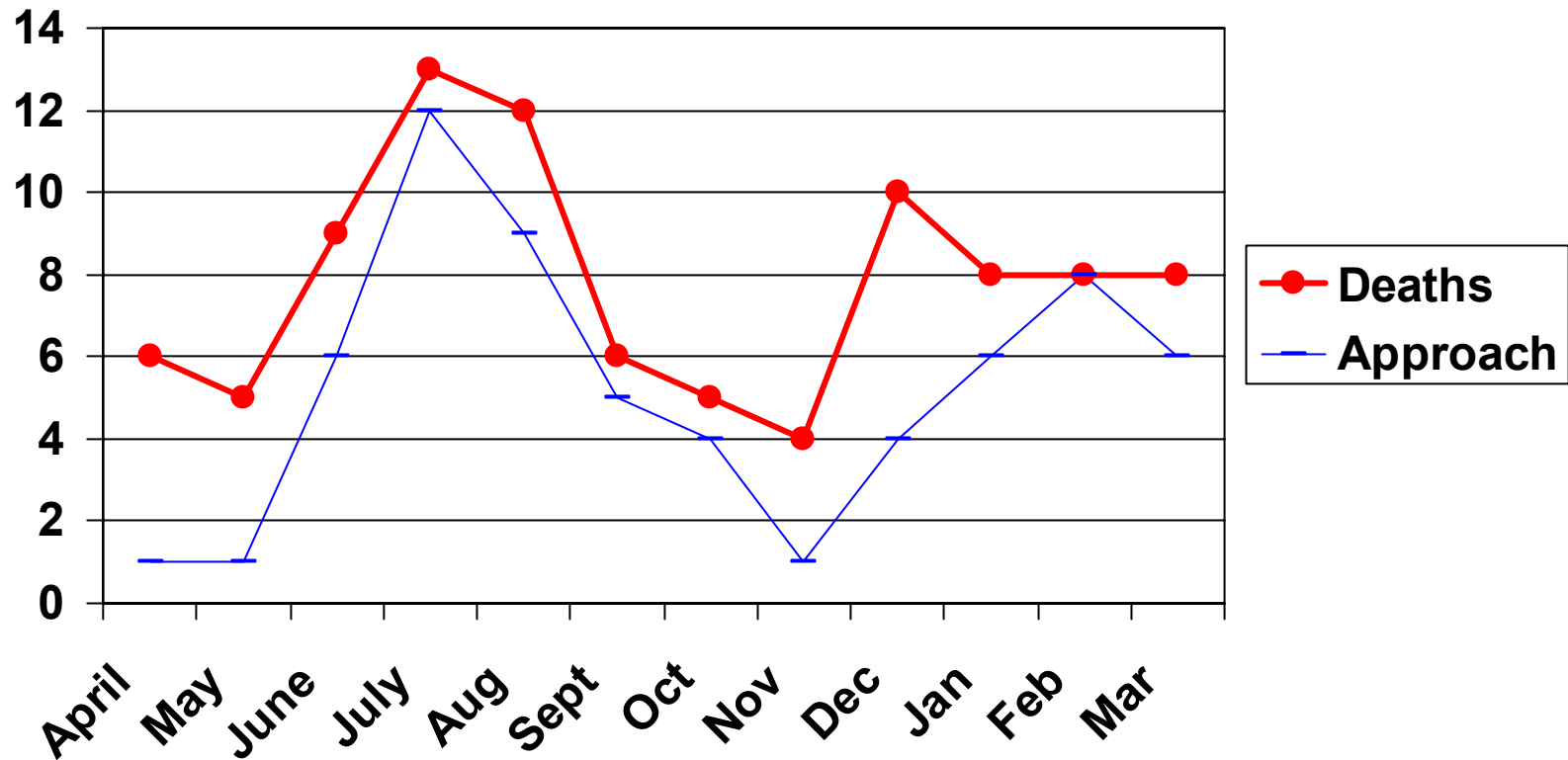
Education

- Many discussions about how to broach the subject of corneal donation.
- Most nurses approach the family when they are handing over the death cert, bereavement leaflet, patient property.
- Give a leaflet about corneal donation and make the approach then

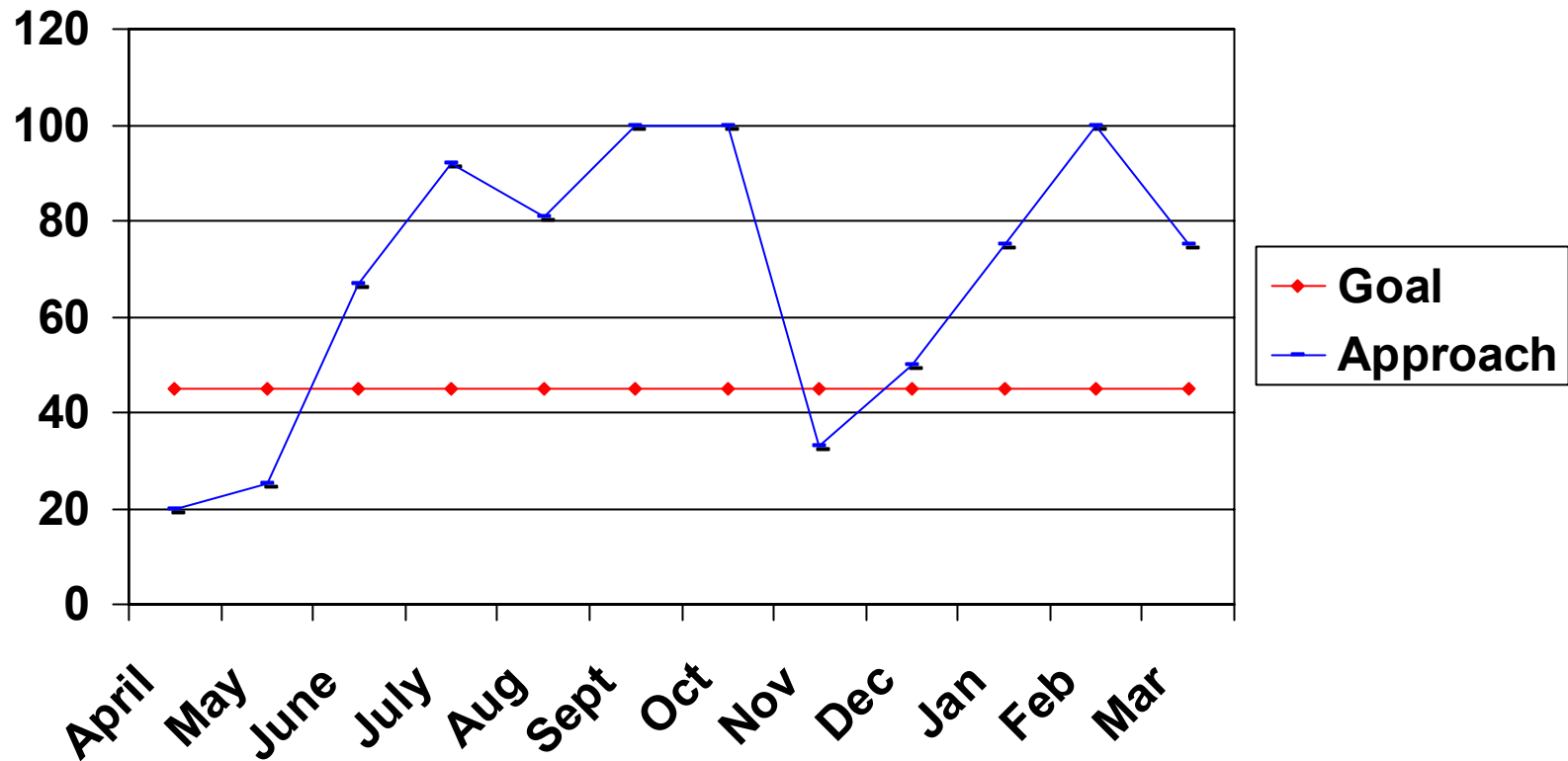
The Results

- Nurses feel offering corneal donation to bereaved families is a positive experience
- Giving families the choice and carrying out the wishes of the deceased.
- Given nursing staff new skills and increased their confidence
- Increasing corneal donation to give the gift of sight to many more people.

Deaths & Approach 2010/2011



APPROACH TO FAMILY 2010/2011



The Results

- 69% average approach rate
- (33% consent rate (i.e. families who agreed to a call from Tissue services) = 19 families
- 11 families gave consent to Tissue services
- 8 families declined corneal donation following further information
- 4 donors had contraindications
- 7 corneal donors

- 9 corneas transplanted
- 5 corneas were unsuitable for transplant

The future

- Continue to approach every family
- Improving family consent rate i.e. families consenting to a call from tissue services
- Corneal donation in the Emergency Dept
- Corneal donation trust wide