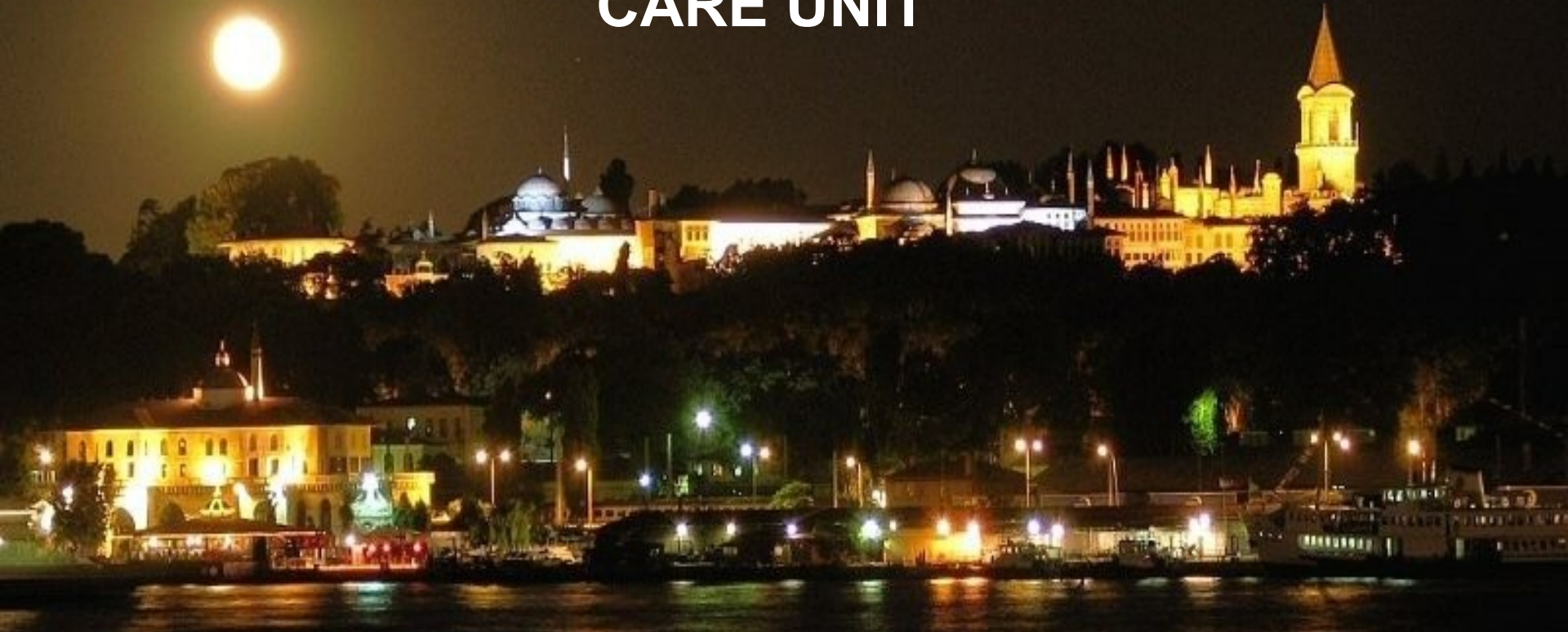


THE PHYSICAL PROBLEMS SEEN FOR THE ROOMING-IN MOTHERS AT PEDIATRIC INTENSIVE CARE UNIT



NURAN AYDIN
KOC UNIVERSITY SCHOOL of NURSING

Background



- Health professionals talk about family participation since 1946. The concept of rooming-in began in maternal and pediatric units over the past century.

(Jackson B.1953,MR Taylor et all 1989, Cleary J. Et all 1986)

- There are many research about mother / family member in PICU/ NICU

Partners / partnership in care

Involvement in care

Family Involvement

Family Participation

Family Centered Care

Family Presence During Interventions

Open Intensive Care Unit.....

- What is the types of the rooming-in?

Mother;

Stay with their baby all day at the same room and attend /responsible many care activities

Come to unit for to do particular activities

(Corlett J 2006, Giannini A 2007, Griffin T. 2006 , Kuzin Jk et all 2007)



Because of Advantages

- For Child

- Reduce need for pain medication
- Reduce complications
- Reduce anxiety
- Shorten hospital stays
- Improve the emotional well-being

- For Mother

- Make the change from hospital to home much smoother for mother and baby/child
- Reduce parenteral stress.....

- For Health Professional

- Easy to prepare go home
- Arrange good relationship with child
- Collaboration facilitate some nursing interventions on child like hygiene.....

(Keane S. et all 1986, Smith et all 2007, Meyer et all 1998)

Of course there is disadvantages like distress on health care team



Researcher study's'

Main subjects' some of these

Family Satisfaction
Parenteral Stress
Emotional Distress
Family Adaptation
Family Needs.....

Tools;

Coping models,
Anxiety Depression Scale,
Satisfaction Inventories,
Critical Care Family Needs Inventory.....

(Auberch et all 2005, Azoulay et all 2001, Philichi 1989, Wigert et all 2008)

We need more information physical problems of the mother related to stay PICU !

Three colorful balloons (green, blue, and purple) are positioned on the left side of the slide. Each balloon has a string and several yellow triangular streamers attached to it, creating a festive and celebratory atmosphere.

Why we wanted to do this study?

Observations

Advices



Studys'

Aim:

To determine physical problems of the mother who stay with own children in PICU

Method:

120 Mothers who stay 5 days and more in PICU (min 6– max 108 days)
Questionnaire includes 45 questions was filled by mothers
Completed 15 months

PICU at a university hospital:

- 4 main bed and one additional bed ,An extra room used for patient who stay long time ,7-8 patient can have intensive care treatment at the same time
- Mothers can stay in PICU nearly 10 year
- Mothers are responsible their child hygiene, feedings, collect some material like urine collection, hot/cold application
- No special room for sleeping/ resting
- A bathroom for all PICU's mothers

MOTHER & CHILD CHARACTERISTICS

100

90

80

70

60

50

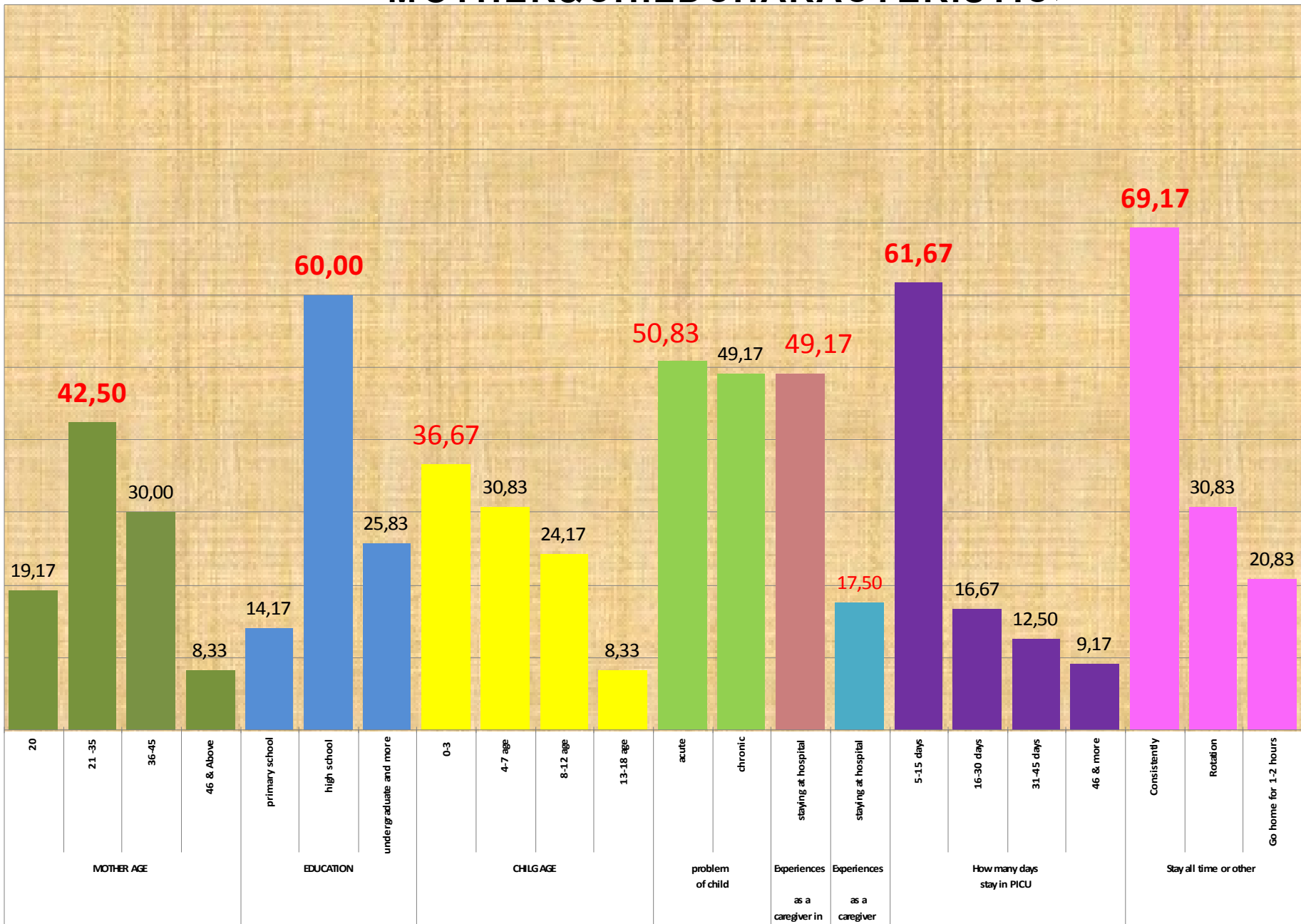
40

30

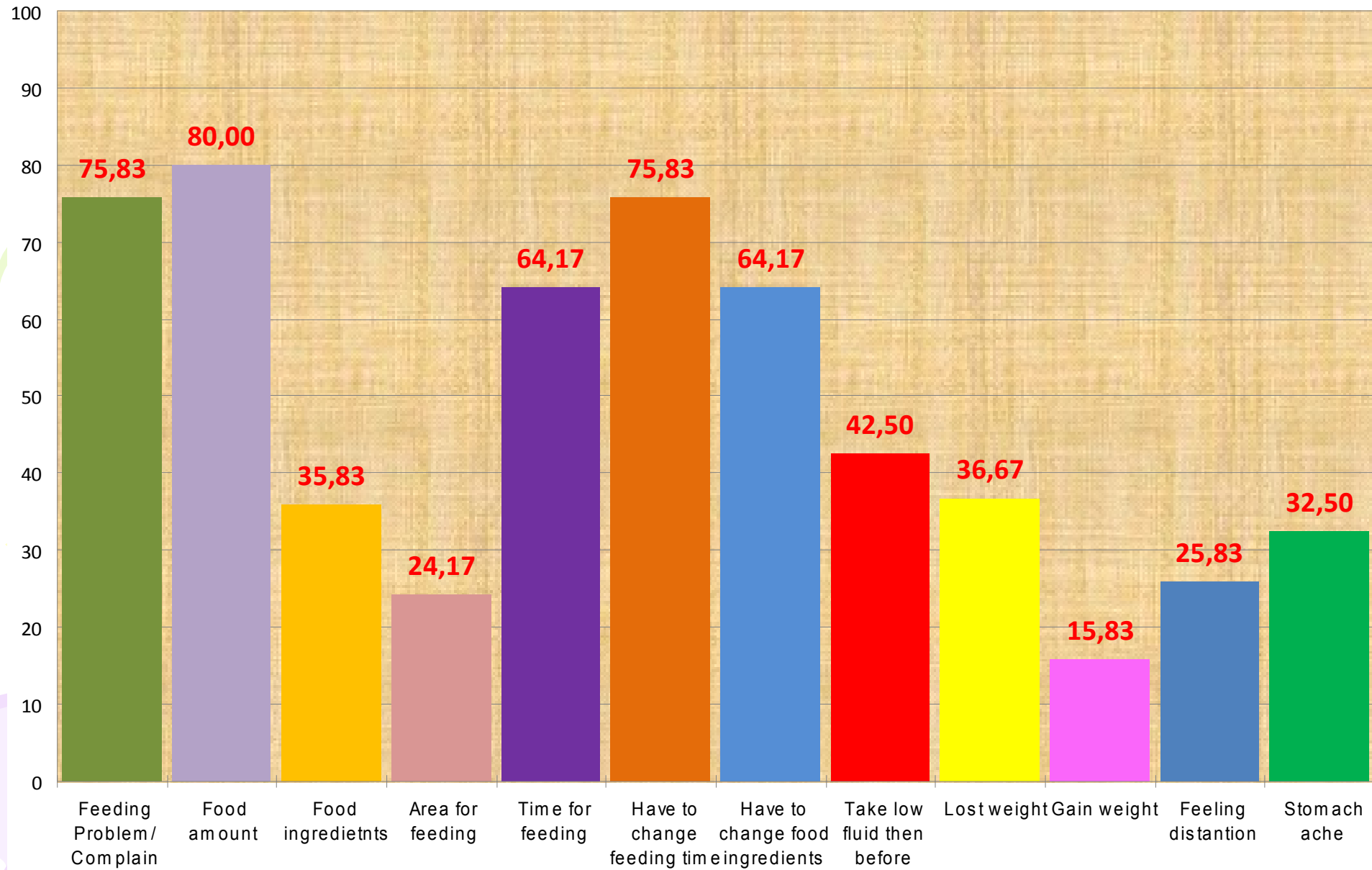
20

10

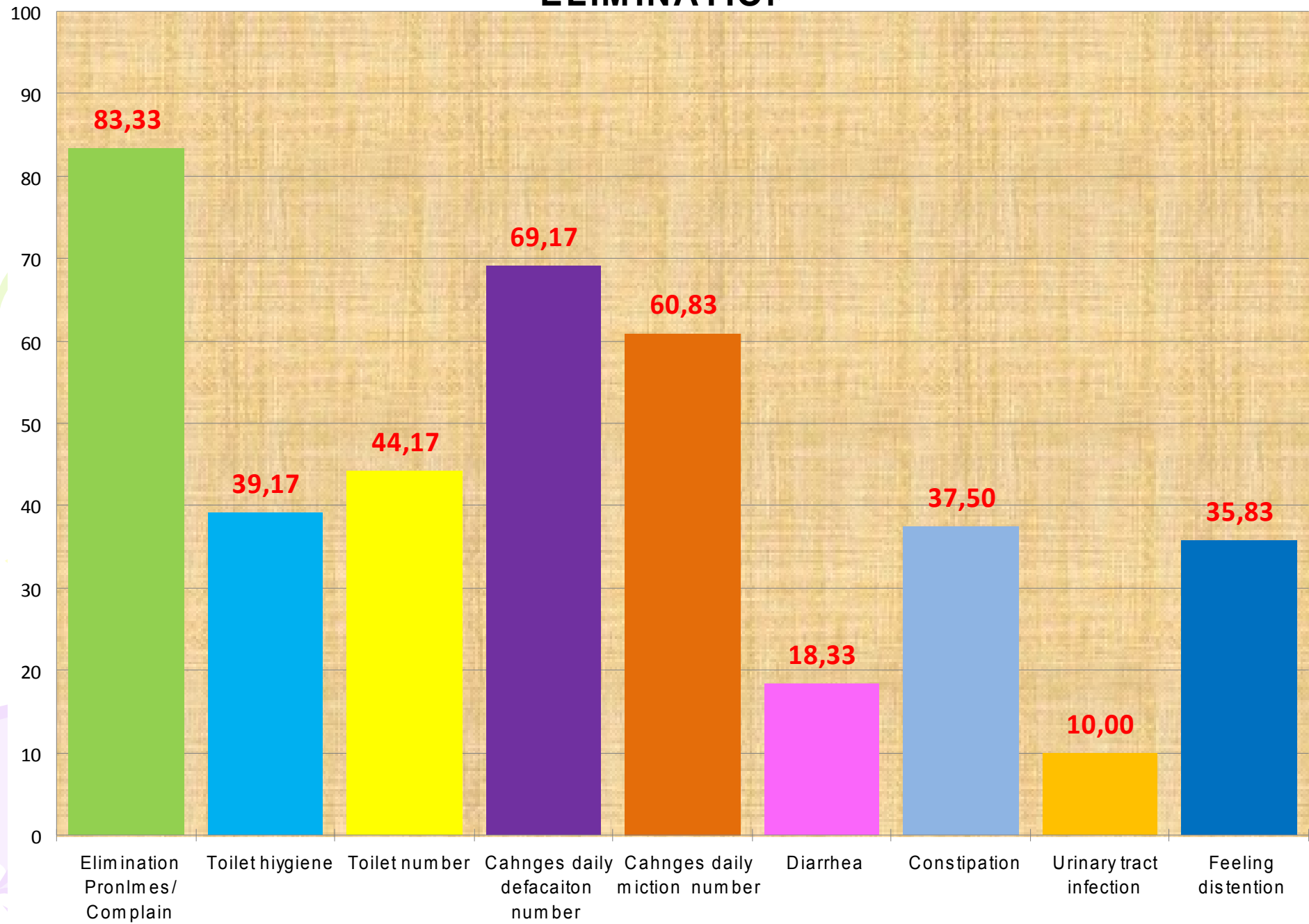
0



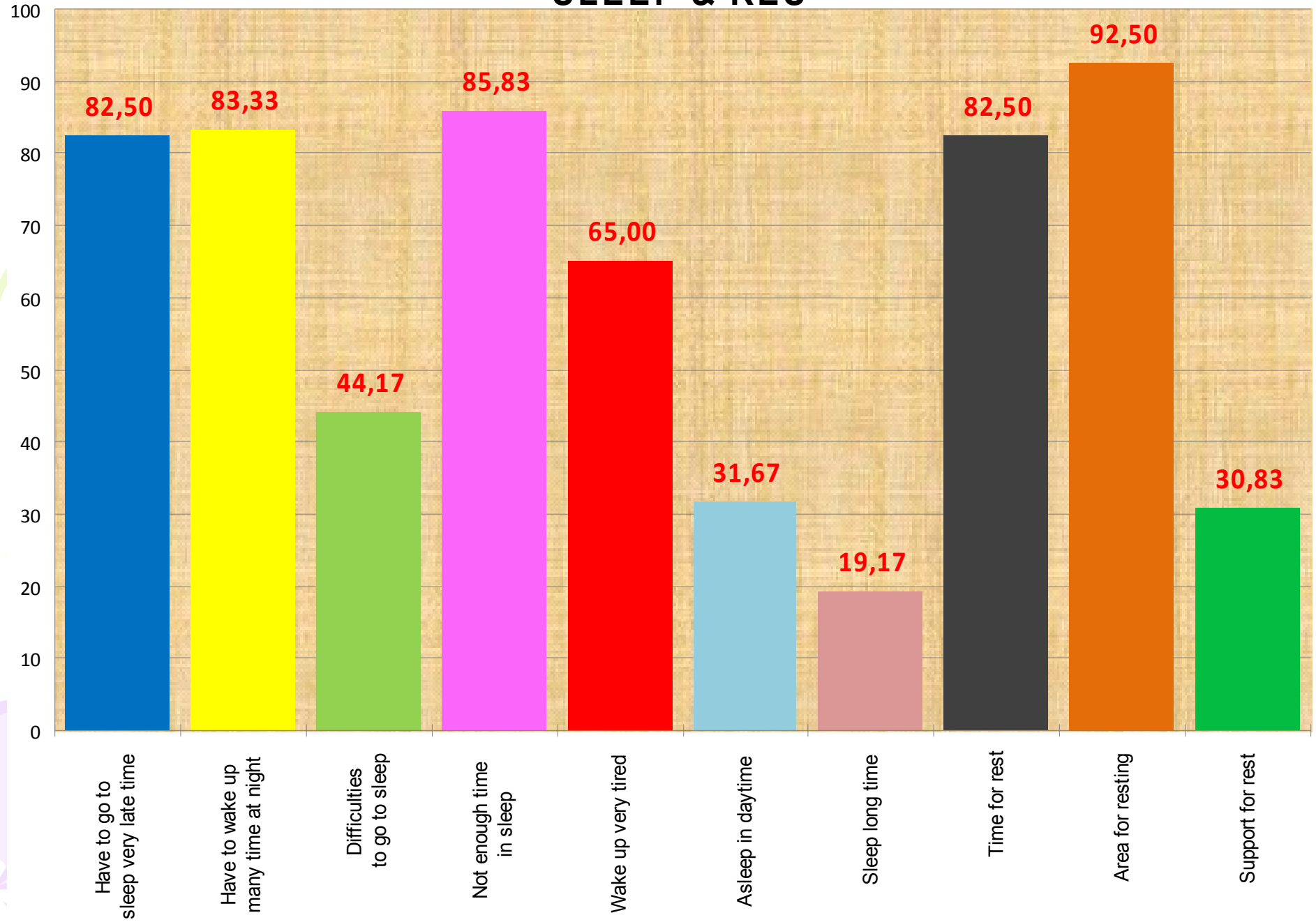
NUTRITION



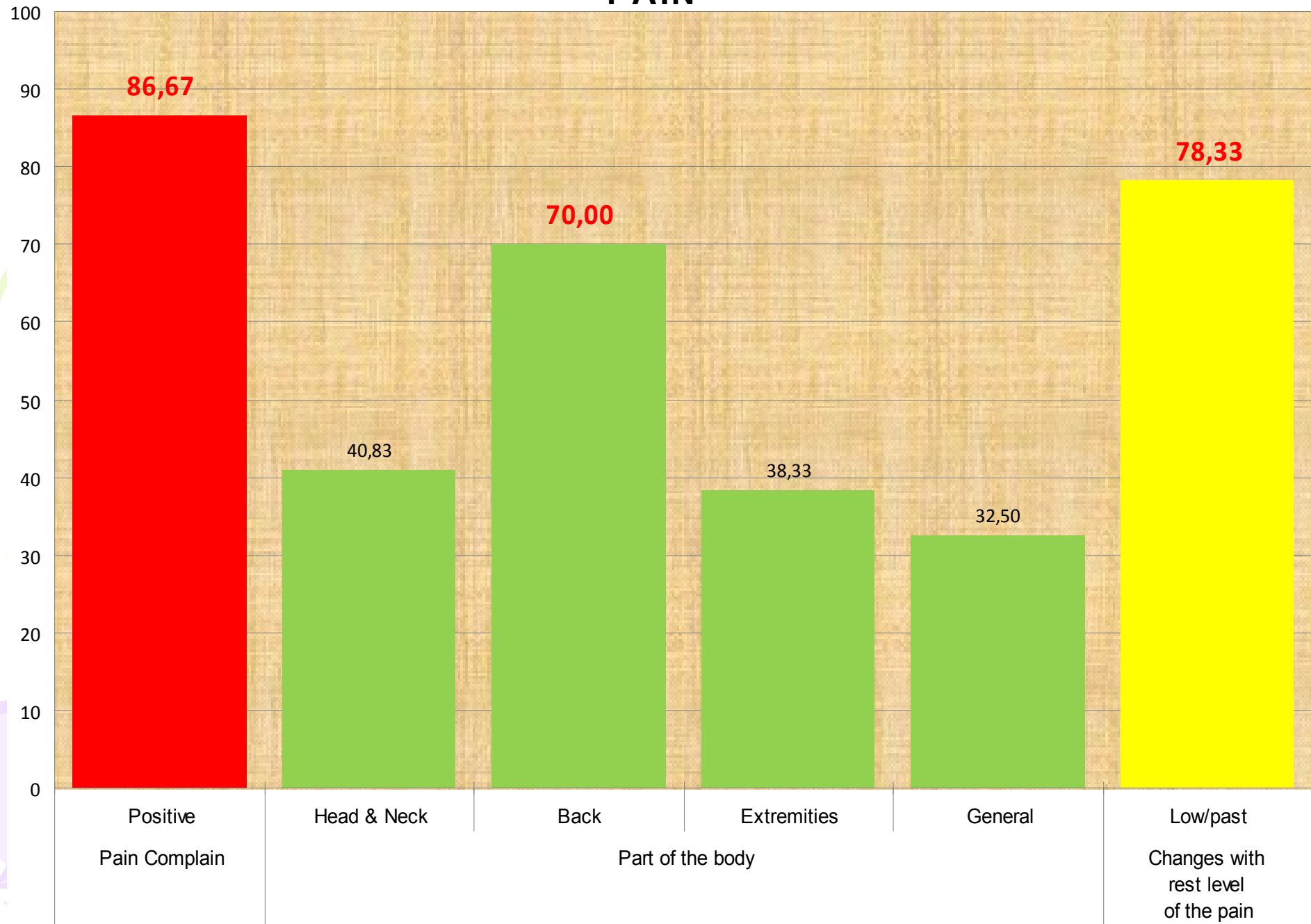
ELIMINATION



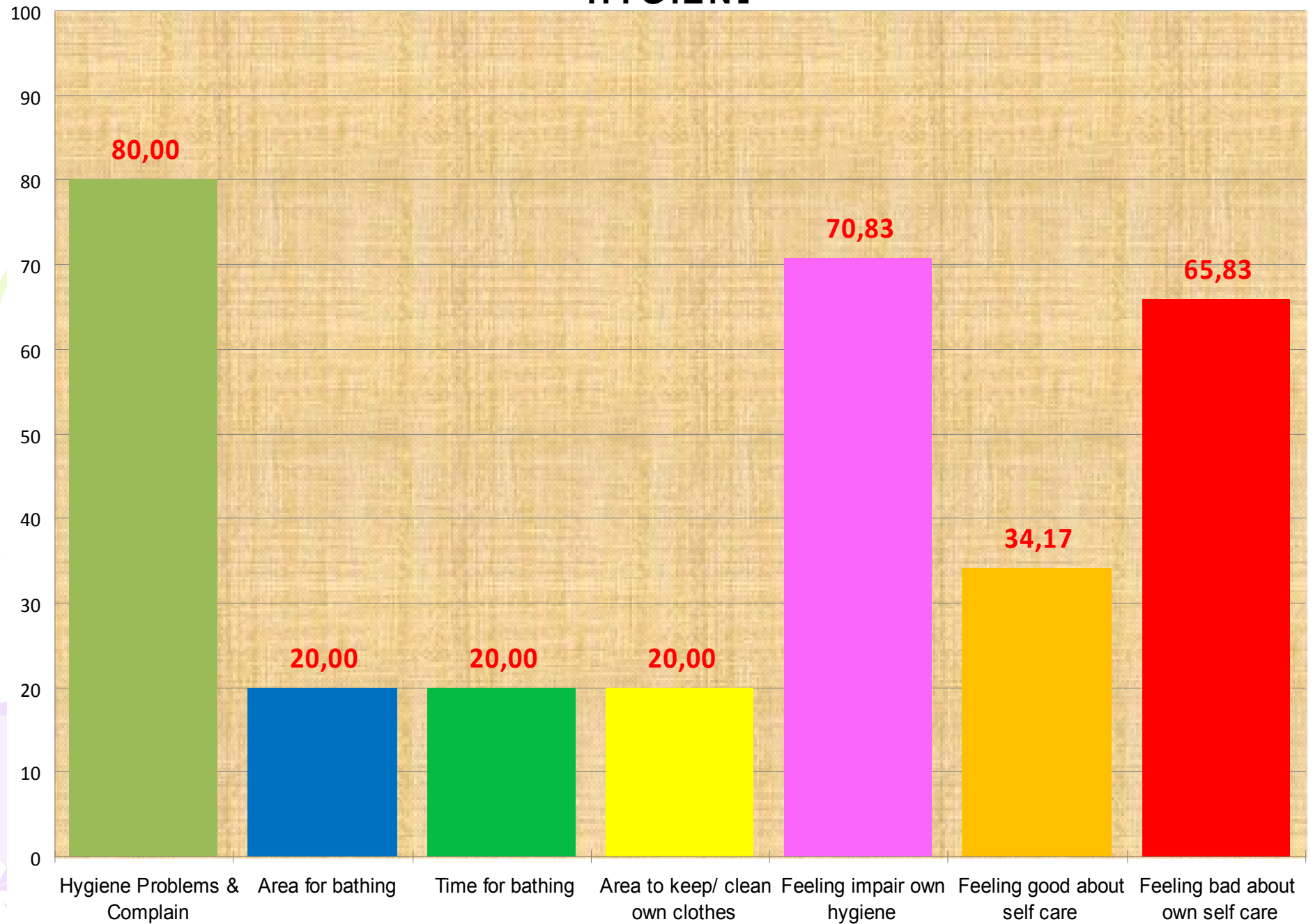
SLEEP & RES



PAIN



HYGIENE





NO SIGNIFICANT CORALATION BETWEEN;

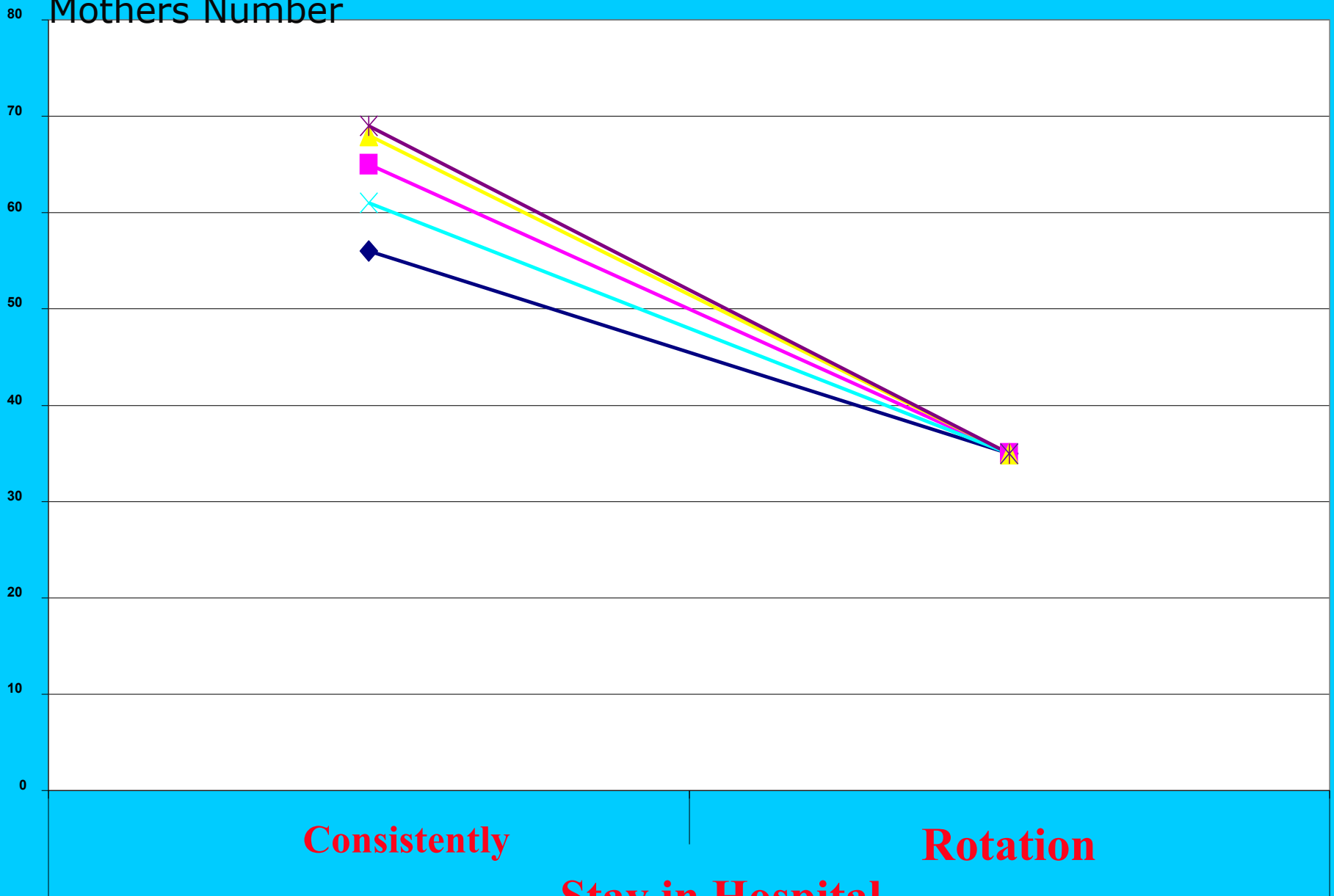
$p > 0,05$

Nutrition.....
Elimination.....
Sleep & rest.....
Pain.....
Hygiene.....

Mother Age
Mother Education
Child Age
Child Ill
Hospital Days

But.....

Mothers Number



Consistently

Rotation

Stay in Hospital

◆ Nutrition

■ Elimination

▲ Sleep & Rest

× Hygiene

* Pain



Problems/Complain	Stay in Hospital				N=120	100,0 %	p
	Consistently		Rotation				
	n	%	n	%			
Nutrition	56	61,5	35	38,5	91	75,8	0,001
Elimination	65	65,0	35	35,0	100	83,3	0,027
Sleep & Rest	68	66,0	35	34,0	103	85,8	0,066
Hygiene	61	63,5	35	36,5	96	80,0	0,008
Pain	69	66,3	35	33,7	104	86,6	0,088



Conclusion

Of course We can not generalize these findings for all intensive care units
But we know many pediatric intensive care have same condition

Mothers who are the thought to be part of intensive care unit team
have some difficulties of rooming in PICU.

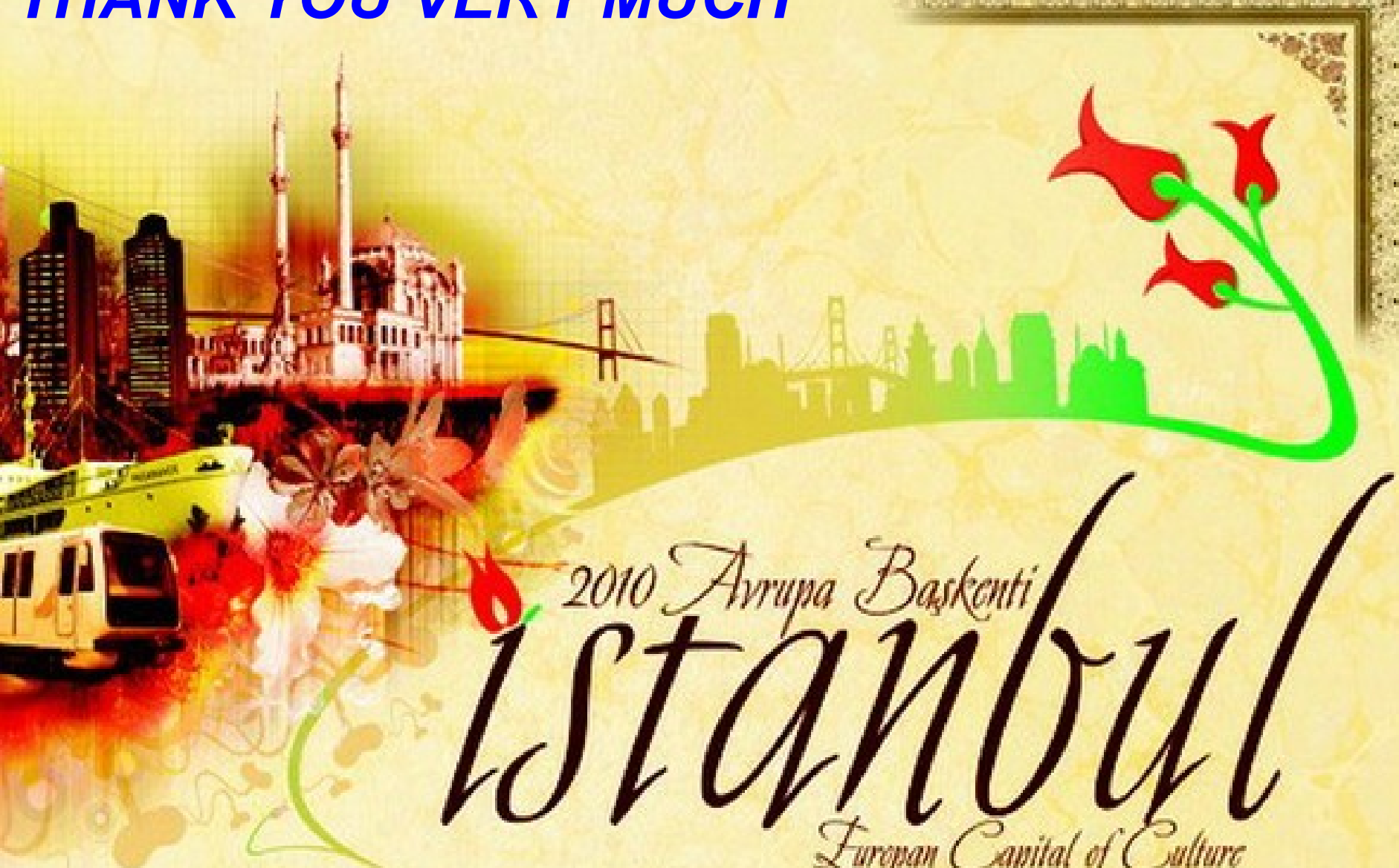
If we want to see mothers as real caregivers, the care giving and staying
conditions of mothers have to re-arrange according to mothers' needs
We have to work together with hospitals managers for this



REFERENCES

- Auberch SM, Kiesler DJ, Wartella J, Rausch S, Wrad KR, Ivatury R. (2005) Optimisim, Satisfaction, With Needs Met, Interpersonel, Perception of the Health Care Team and Emotional Distress in Patients' Family Members During Critical Care Hospitalization. *American Journal of Critical Care*, 14:202-210
- Azoulay E, Pochard F, Chevret S, Lamaire F, Mokhtari M, Gall JR, Dnainaut JF, Sclemmer B (2001= Meeting the Needs of Intensive Care Unit Patient Families. *American Journal of Respiratory and Critical Care Medicine*, 163: 135-139
- Cleary J, Gray OP, Hall DJ, Rowlandson PH, Sainsbury CP, Davies MM. (1986) Parental involvement in the lives of children in hospital. *Arch Dis Child* 61(8):779-787.
- Corlett J, Twycross A. (2006) Negotiation of Parenteral Roles within Family-Centered Care: A Review of the Research. *Journal of Clinical Nursing*, 15: 1308-1316
- Franck LS, Spencer C. (2003)Parent visiting and Participation in Infant Caregiving Activities in a Neonatal Unit. *BIRTH*, 30(1):31-35
- Giannini A. (2007) Open Intensive Care Units: The Case in Favour. *Minerva Anestesiologica*, 73(5):299-306
- Jakson B. (1953). The Devolopment of Rooming at Yale. *Yale Journal of Biology And Medicine*, pp 484-495
- Griffin T. (2006) Family-Centered Care in the NICU. *J Perinat Neonat Nurs*, 20(1):98-102
- Keane S, Garralda ME, Keen JH. (1986)Resident parents during paediatric admissions. *Int J Nurs Stud* 23(3):247-253.
- Kuzin JK, Yborra JG, Taylor MD, Chang AC, Altman CA, Whitney GM, Mott Ar (2007). Family Member Presence During Interventions in the Intensive Care Unit: Perceptions Cardiac Intensive Care Providers. *Pediatircs*, 895-901
- Meyer EC, Myren L, Snelling LK. (1998) Pediatric Intensive Care: The Parents Experiences AACN Clinical Issues, 9(1):64-74
- Philichi LM. (1989) Family Adoptation During a Pediatric Intensive Care Hospitalization. *Journal of Pediatr Nursing* 4:268-276
- Smith AB, Hefley GC, Anand KJS (2007). Parent Bed Space in The PICU: Effect on Parenteral Stres. *Pediatric Nursing*, 33(3): 215-221
- Taylor MR, O'Connor P.(1989) Resident parents and shorter hospital stay. *Arch Dis* ,64(2):274-276.
- Wigert H, Berg AL (2008)ç Conditions for Parents Participation in the Care of their Child in Neonatal Intensive Care- AField Studyç *BMC Pediatrics*, 1-9

THANK YOU VERY MUCH



2010 Avrupa Başkenti
Istanbul
 European Capital of Culture

Avrupa Kültür Başkenti (2000) Seçilen Kentler \, Which cities have been chosen as European Capital of Culture?
 1996 Agra - Hindistan 1996 Firenze - İtalya 1997 Amsterdam - Hollanda 1998 Berlin - Almanya 1999 Paris - Fransa 1999 Glasgow - İskoçya
 1999 Dublin - İrlanda 1999 Madrid - İspanya 1999 Atina - Yunanistan 1999 Ljubljana - Slovenya 1999 Essen - Almanya 1999 Sevilla - İspanya
 1999 Valencia - İspanya 1999 Stockholm - İsveç 1999 Helsinki - Finlandiya 2000 Bergen - Norveç 2000 Bologna - İtalya 2000 Wrocław - Polonya
 2000 İstanbul - Türkiye 2000 Poznań - Polonya 2000 Prag - Çek Cumhuriyeti 2000 Santiago de Compostela - İspanya 2001 Porto - Portekiz 2001 Rotterdam - Hollanda
 2001 Brno - Çekya 2001 Salamanca - İspanya 2001 Antalya - Türkiye 2002 Gwangju - Güney Kore 2002 Lille - Fransa 2002 Cork - İrlanda 2002 Palma - İspanya
 2002 Lüdenscheid - Almanya 2002 Liverpool - İngiltere 2002 Stavanger - Norveç 2003 Linz - Avusturya 2003 Utrecht - Hollanda

